



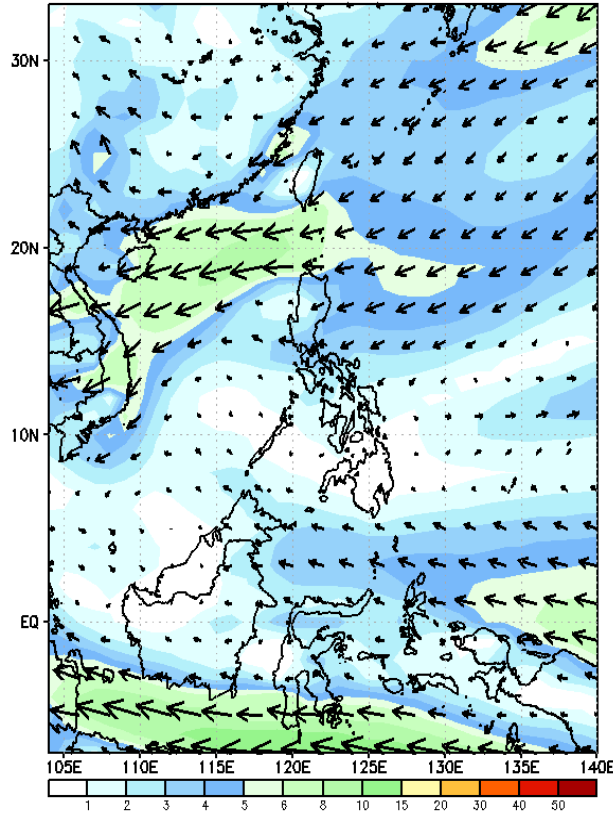
# Week 1 & Week 2 Forecast for the Philippines using GEFS Model



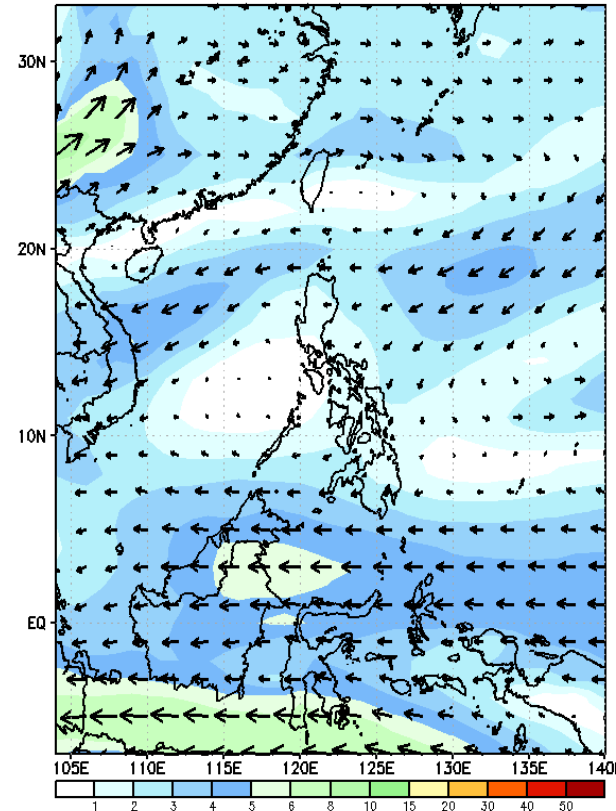
# GEFS Week-1 Wind Forecasts:

Week 1: Oct 09-15, 2024

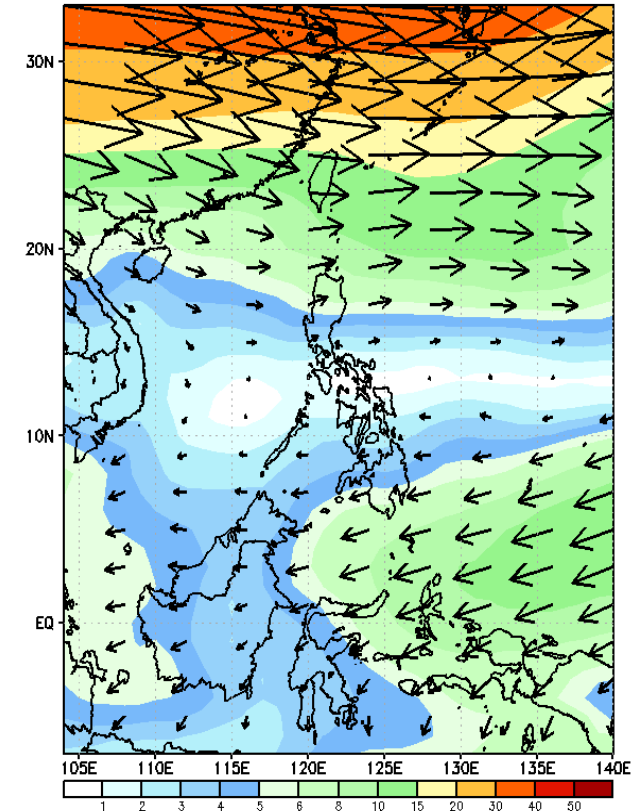
GEFS Week-1 850-hPa Wind Total  
Valid: 20241009 - 20241015



GEFS Week-1 700-hPa Wind Total  
Valid: 20241009 - 20241015

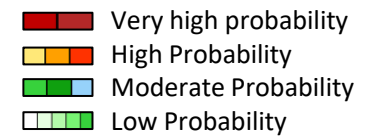


GEFS Week-1 200-hPa Wind Total  
Valid: 20241009 - 20241015



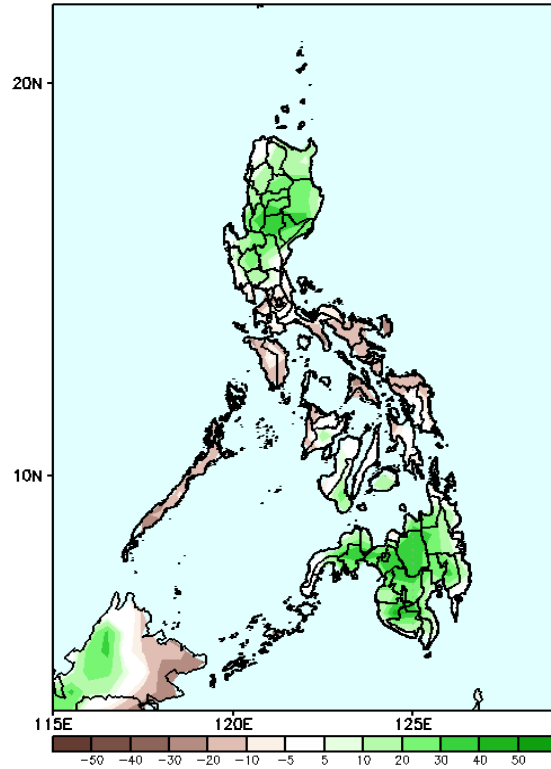
Easterlies affecting most parts of the country.

# Precipitation Anomaly and Exceedance Probability > 25/50 mm

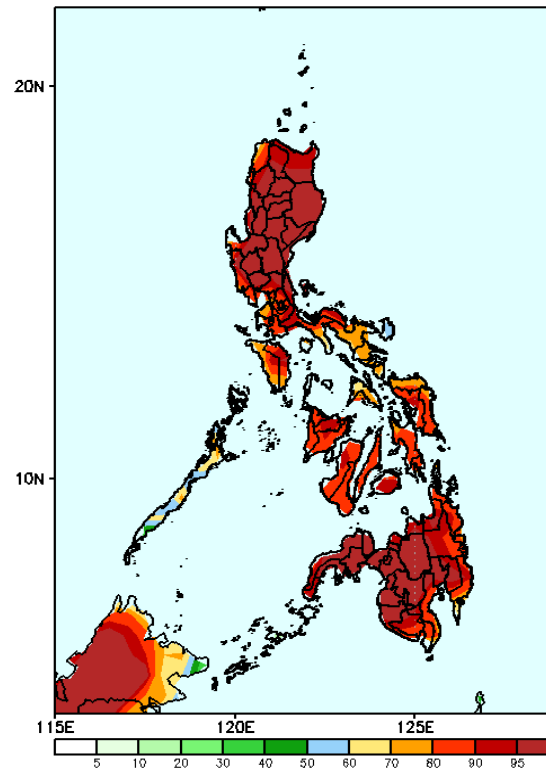


Week 1: Oct 09-15, 2024

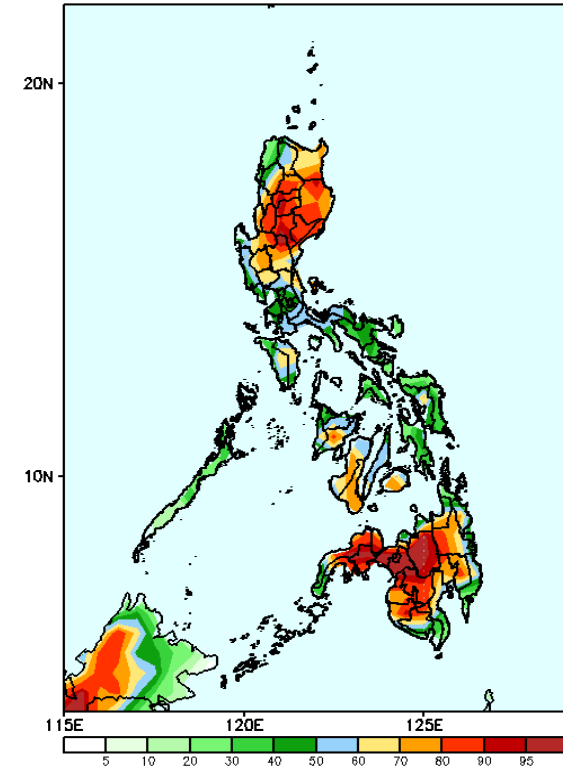
GEFS Week-1 Precip Anomaly  
Valid: 20241009 - 20241015



GEFS Week-1 Exceedance Prob. > 25mm  
Valid: 20241009 - 20241015



GEFS Week-1 Exceedance Prob. > 50mm  
Valid: 20241009 - 20241015



Increase in rainfall of more than 50mm is likely in Northern and Central Luzon, Iloilo, Negros Oriental, Cebu and most of Mindanao while a deficit of upto 50mm in rainfall is likely for the rest of Luzon and Visayas is expected.

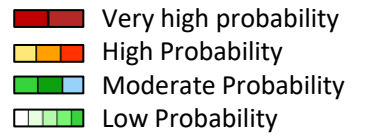
### Probability to Exceed 25mm

- High to very high over most parts of the country;
- Moderate to high over Catanduanes and Palawan.

### Probability to Exceed 50mm

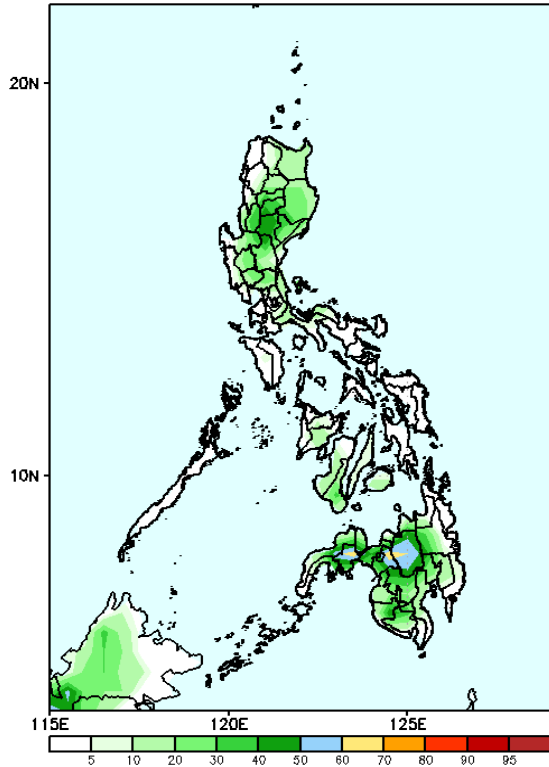
- High to very high over Central Mindanao;
- Moderate to high over most of Luzon, Western and Central Visayas, NIR, and the rest of Mindanao;
- Low to moderate over Palawan, Ilocos Norte, Bicol Region, and Eastern Visayas.

# Exceedance Probability > 100/150/200 mm



Week 1: Oct 09-15, 2024

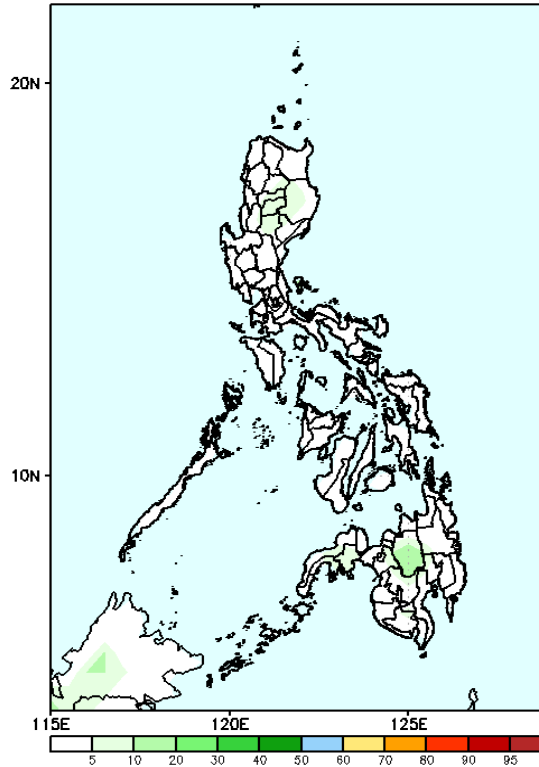
GEFS Week-1 Exceedance Prob. > 100mm  
Valid: 20241009 - 20241015



### Probability to Exceed 100mm

- Low to moderate over Bukidnon;
- Low over the rest of the country.

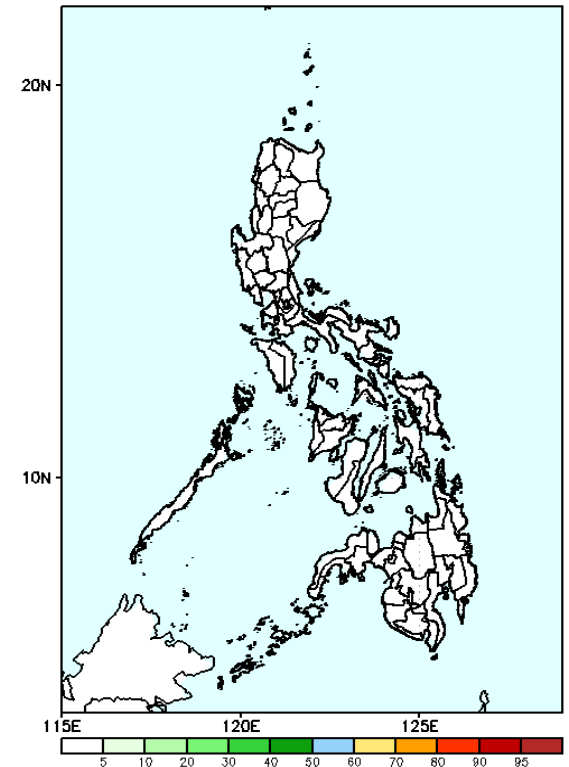
GEFS Week-1 Exceedance Prob. > 150mm  
Valid: 20241009 - 20241015



### Probability to Exceed 150mm

- Low across the country.

GEFS Week-1 Exceedance Prob. > 200mm  
Valid: 20241009 - 20241015



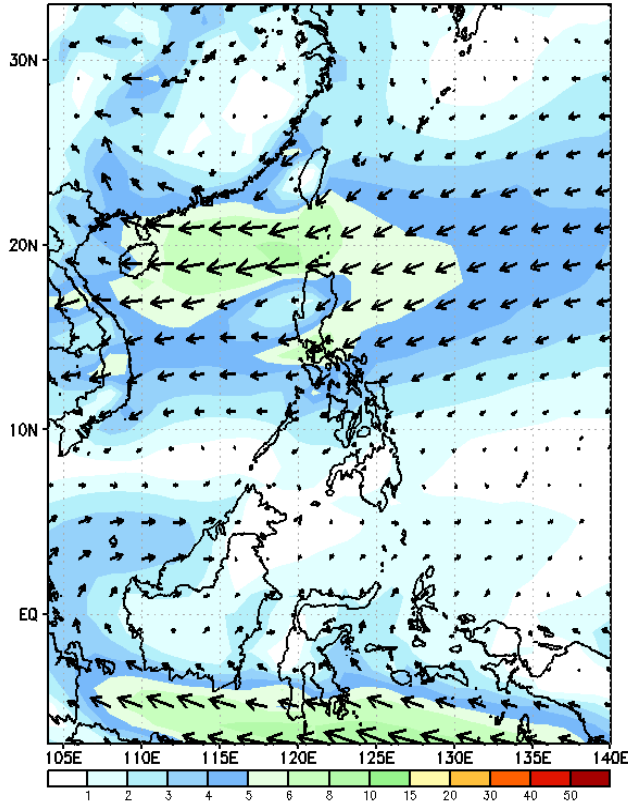
### Probability to Exceed 200mm

- Low across the country.

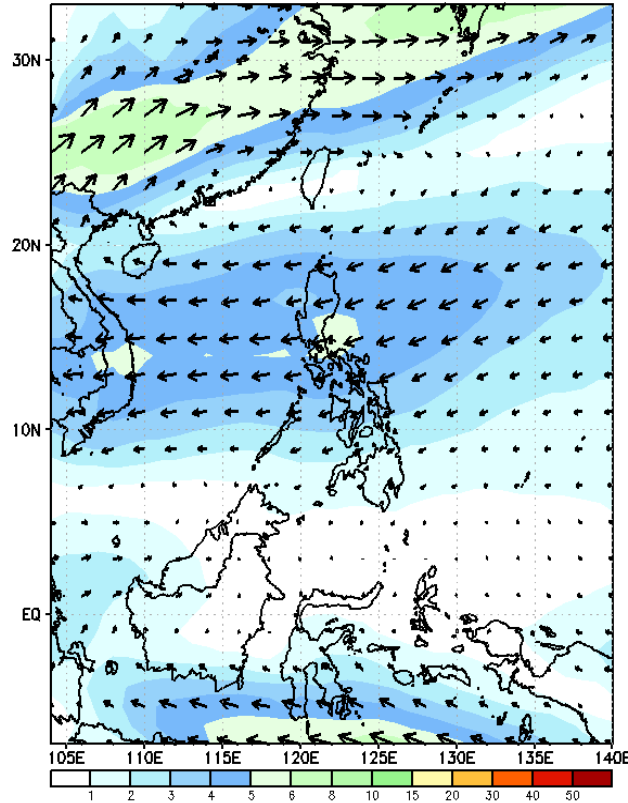
# GEFS Week-2 Wind Forecasts:

Week 2: Oct 16-22, 2024

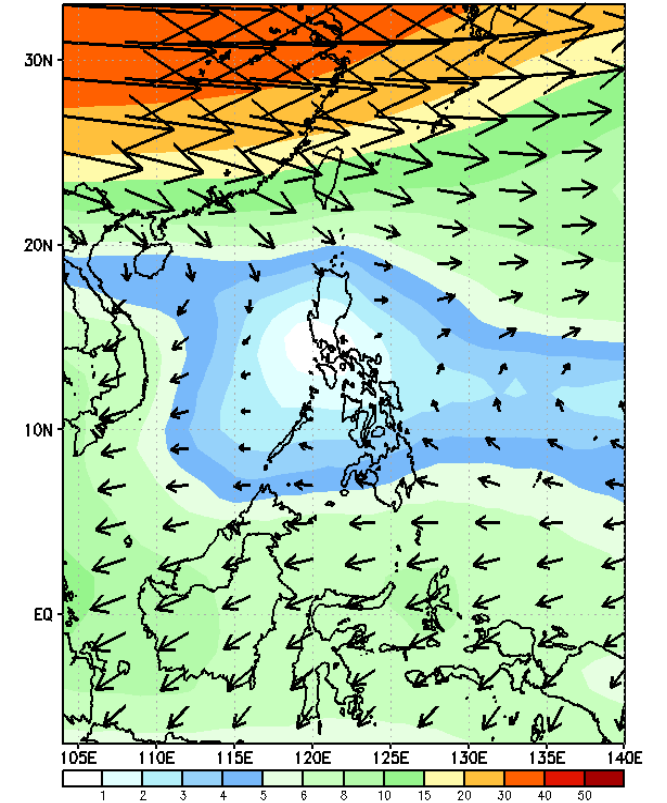
GEFS Week-2 850-hPa Wind Total  
Valid: 20241016 - 20241022



GEFS Week-2 700-hPa Wind Total  
Valid: 20241016 - 20241022

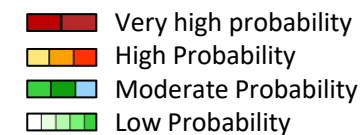


GEFS Week-2 200-hPa Wind Total  
Valid: 20241016 - 20241022



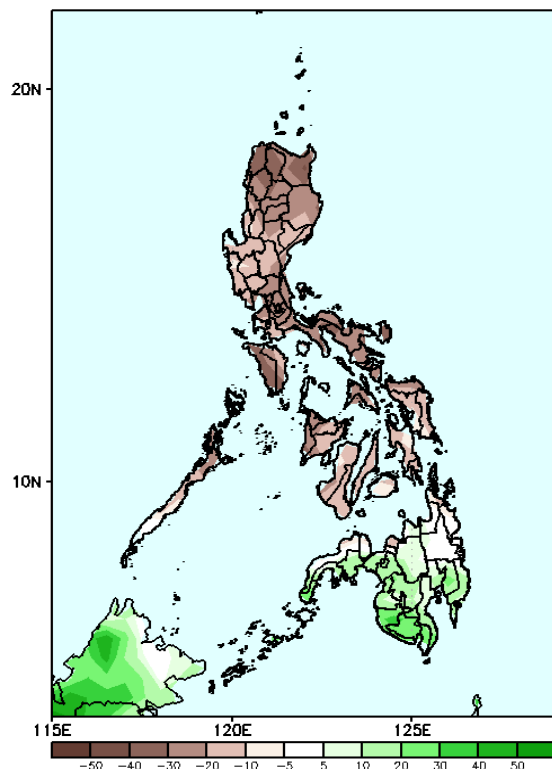
Easterlies affecting most parts of the country.

# Precipitation Anomaly and Exceedance Probability > 25/50 mm

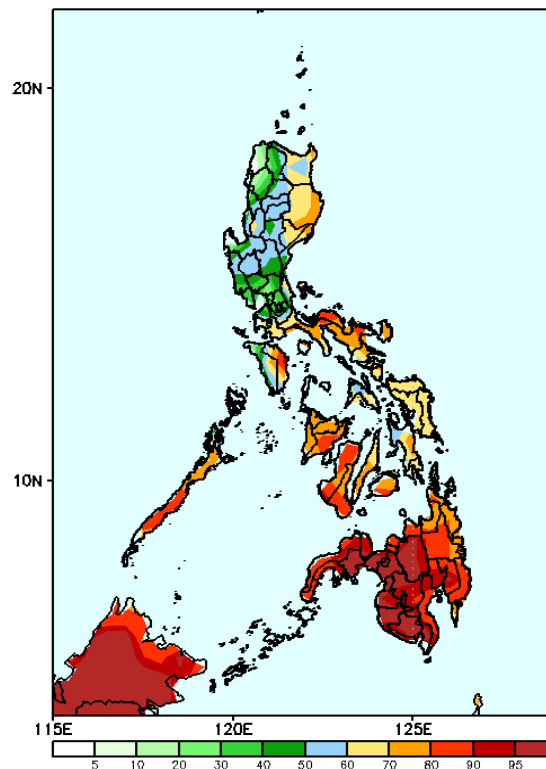


Week 2: Oct 16-22, 2024

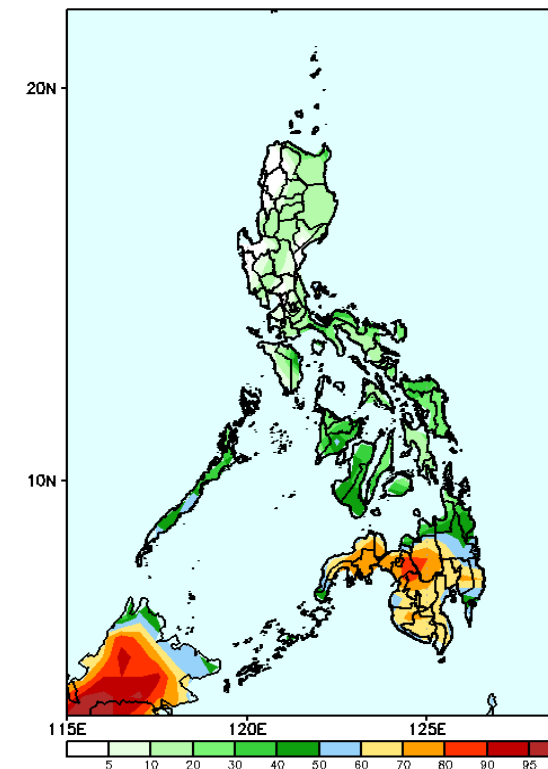
GEFS Week-2 Precip Anomaly  
Valid: 20241016 - 20241022



GEFS Week-2 Exceedance Prob. > 25mm  
Valid: 20241016 - 20241022



GEFS Week-2 Exceedance Prob. > 50mm  
Valid: 20241016 - 20241022



Rainfall deficit of more than 50mm is likely in most parts of Luzon and Visayas while an increase of up to 40mm of rainfall is expected in most parts of Mindanao.

### Probability to Exceed 25mm

- High to very high over most parts of Mindanao.
- Moderate to high over most parts of Luzon and Visayas

### Probability to Exceed 50mm

- Moderate to high over most of Mindanao;
- Low to moderate over the rest of the country.

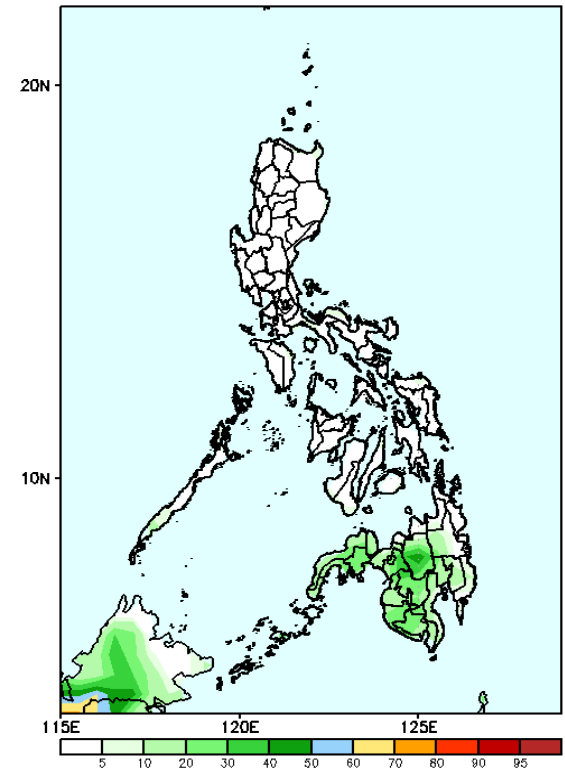


# Exceedance Probability > 100/150/200 mm

- Very high probability
- High Probability
- Moderate Probability
- Low Probability

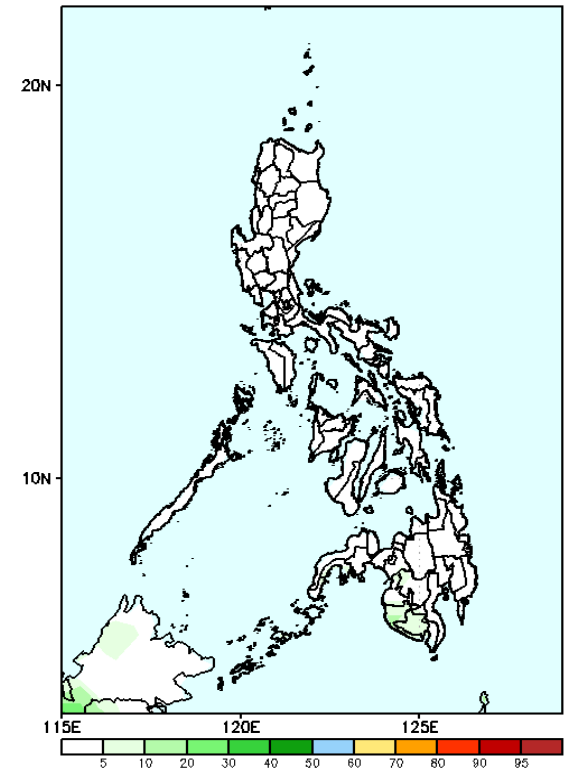
Week 2: Oct 16-22, 2024

GEFS Week-2 Exceedance Prob. > 100mm  
Valid: 20241016 - 20241022



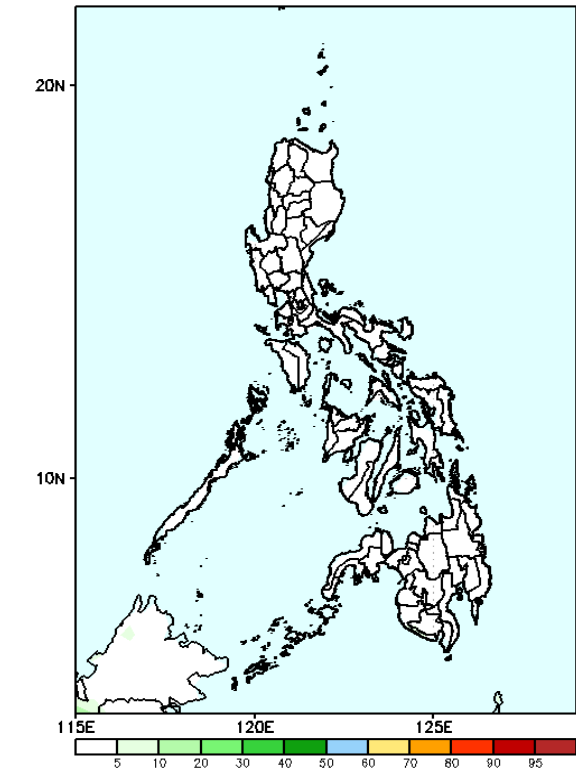
**Probability to Exceed 100mm**  
• Low across the country.

GEFS Week-2 Exceedance Prob. > 150mm  
Valid: 20241016 - 20241022



**Probability to Exceed 150mm**  
• Low across the country.

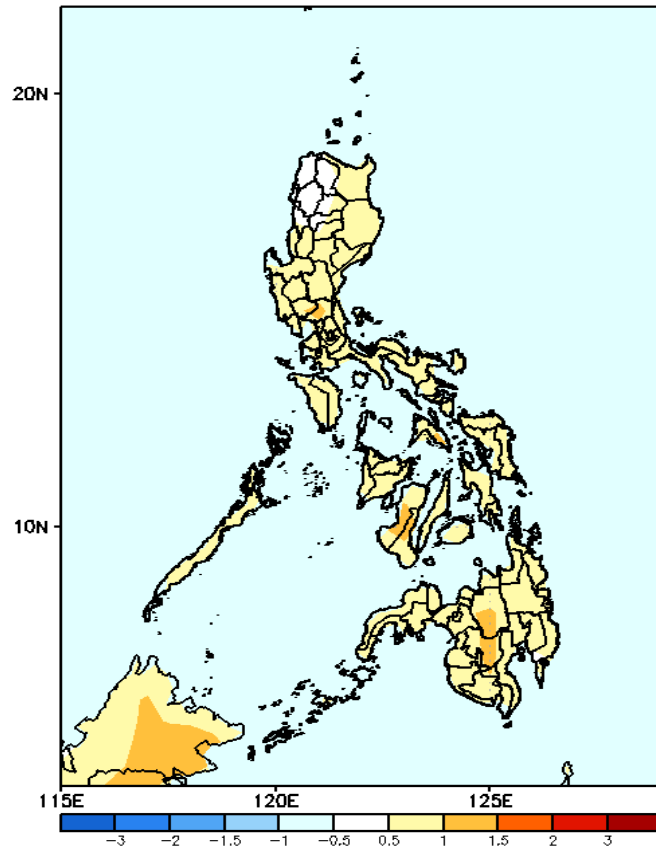
GEFS Week-2 Exceedance Prob. > 200mm  
Valid: 20241016 - 20241022



**Probability to Exceed 200mm**  
• Low across the country.

# GEFS Week-1 & 2 Forecasts: T2m Anomaly

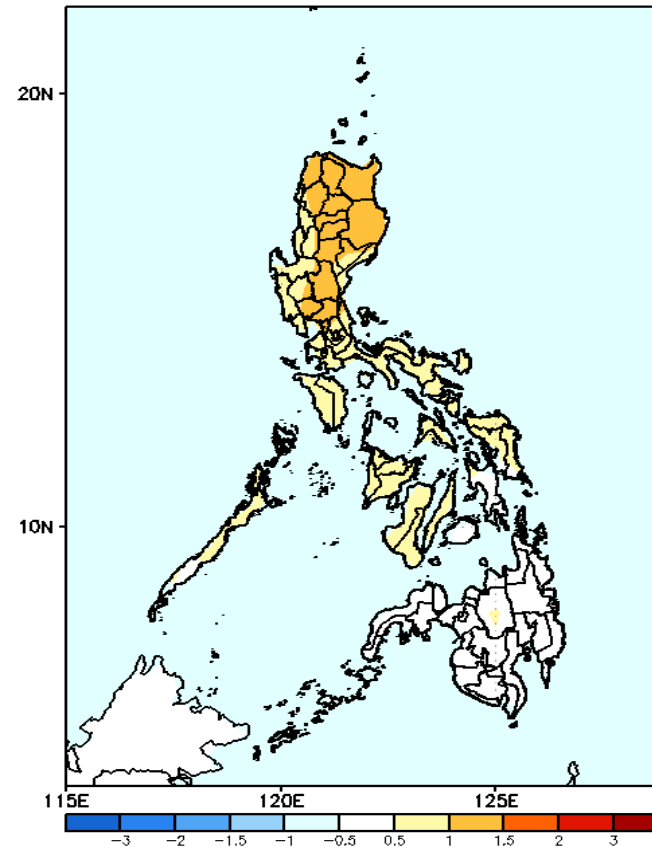
GEFS Week-1 T2m Anomaly  
Valid: 20241009 - 20241015



## 2m Temperature Week 1: Oct 09-15, 2024

Near to slightly warmer than average surface air temperature will likely be experienced in most parts of the country.

GEFS Week-2 T2m Anomaly  
Valid: 20241016 - 20241022



## 2m Temperature Week 2: Oct 16-22, 2024

Near to slightly warmer than average surface air temperature will likely be experienced in most parts of the country.

